

# SADLEIR

Trees pulled together from various sources as noted – principally Anthony Maitland’s Chadwick tree; Richard Sadleir of New Zealand’s work at [www.rootsweb.com/~irltip2/sadlier.htm](http://www.rootsweb.com/~irltip2/sadlier.htm) and [www.sadleir.org](http://www.sadleir.org); the [irish-books.org](http://www.irish-books.org) Sadleir history; Burke’s Landed Gentry and the Dictionary of National Biography, both on Ancestry.com; and abridged tree published in Prince of Swindlers; a Clarke family tree at <http://www.marshalclarke.com/ClarksOfGraiguenoepark/Clarks5.htm> expands but sometimes contradicts the others. See also my snippets file SADLEIR MISC! I think I can now finally connect “our” Tipperary/Lancashire Sadleirs to earlier ones. There seems to be no distinction between the various spellings of the name in trying to define or discount relationships.

Colin Salter, 10 May 2014



“The Avenue leading to Kingswell House, Tipperary”  
artist unknown, 1868

Kingswell was renamed Sadleirswells in the 18<sup>th</sup> century, and then reverted to Kingswell when Richard William Ralph Sadleir leased it longterm to John Massy. The figures at bottom left are supposedly those of the lodgekeeper John Massy and his grand-daughter Lucy Weelan or Wheeler

## JOHN SADLEIR

**John SADLEIR** 11x great grandfather of the present writer b. c1510, of Hackney, son of Henry of Hackney and brother of Sir Ralph (see SADLEIR EX CLIFFORD tree), commanded a company at the Siege of Boulogne 1544; had issue, inc.:

- 1/1 **John SADLEIR** b. c1535, d. 1583; of Stratford-upon-Avon, where he was Alderman & High Bailiff 1570-71; m. **Joan Ensedale**; they had issue, inc.:
- 2/1 **John SADLEIR** b. c1564, d. 1625; of Stratford-upon-Avon, where he was Alderman 1598, High Bailiff 1599-1600 and 1612-13; m. c1584 **Isabella Smart**; they had issue, inc.:
- 3/1 **John SADLEIR** b. c1587, d. 1658; of Stratford-upon-Avon, and later a grocer in London; had lands at Merchant’s Hope and Martins Brandon nr present-day Richmond in Virginia, USA; was granted lands in Co. Tipperary but d. before he could take them up; m. 1610 **Elizabeth Quiney**<sup>1</sup>; they had issue, inc.:
- 4/1 **John SADLEIR** b. 1632<sup>2</sup>, d. 1680; of London, then the estate of Ballintemple, co. Tipperary; he went to Ireland under the Act of Settlement of Charles II in 1669, where he took up his father’s lands; m. c1660 Mary Clements; they had issue, inc.:
- 5/1 **a son**
- 5/2 **Samuel SADLEIR** b. c1667, d. 1717; of Shanballymore co. Tipperary; m. c1687 Hannah Taylor (nee White) and had issue – see SAMUEL SADLEIR below
- 5/3 **Clement SADLEIR** d. 1715<sup>3</sup> or 1717<sup>4</sup>; of Shrone Hill<sup>5</sup> or Ballintemple/Ballinard<sup>6</sup> co Tipperary; third son<sup>7</sup> of John Sadleir; ; m. after 1692 as her 2nd husband Grace Ballard nee Chadwick (c1664-c1739)<sup>8</sup>, supposed dau of William Chadwick; they had issue inc:
- 6/1 **Clement William or John Clement SADLEIR** d. 1771<sup>9</sup>; of Shronell, son of Clement Sadleir (d.1715) and Grace Ballard nee Chadwick; m. Bridget ----- and had issue:
- 7/1 **William SADLEIR** d. 1791; of Shronell; m. Grace Ryan of Ballyvistea (of the Ryans of Scarteen); they had issue:
- 8/1 **Clement William SADLEIR** tenant farmer of Shronehill co Tipperary; m. 1806<sup>10</sup> Johanna dau of James Scully (founder of a private bank in Tipperary)<sup>11</sup>; couple were both Catholics; they had issue, inc.:
- 9/1 **William SADLEIR** b. 1807; of Shronell and Dublin
- 9/2 **James SADLEIR** b. 1809 d. Zurich 1881<sup>12</sup>; established the Tipperary Joint Stock Bank of which he was manager at the time of his bro John’s and the bank’s downfall in 1856 (bank was “hopelessly insolvent”, found to have assets of only £35,000, and losses to depositors – mostly small farmers and clerks – amounted to £400,000); later M.P. for Tipperary<sup>13</sup>; m.

<sup>1</sup> RSNZ notes: “The Sadleir, Quiney and Shakespeare families all intermarried, and one Hamnet Sadler was godfather to William Shakespeare’s children and is mentioned in his will.”

<sup>2</sup> Prince of Swindlers tree gives death date as 1632

<sup>3</sup> Chadwick tree

<sup>4</sup> from <http://www.marshalclarke.com/ClarksOfGraiguenoepark/Clarks5.htm>

<sup>5</sup> RSNZ

<sup>6</sup> Chadwick tree

<sup>7</sup> RSNZ

<sup>8</sup> marriage details from Chadwick tree

<sup>9</sup> Chadwick tree names him as John Clement Sadleir, but given the names of his son and grandson, William seems more likely

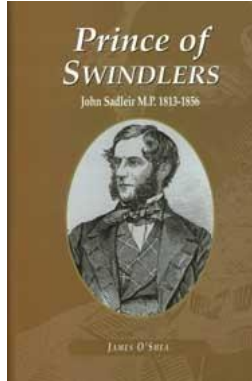
<sup>10</sup> <http://www.idreamof.com/irish/marriages.htm>

<sup>11</sup> Scully details from Dictionary of National Biography

<sup>12</sup> dates from O’Shea, but I’m not clear whether they are James’ or his wife’s

<sup>13</sup> career details from his brother John’s entry in the Dictionary of National Biography

- 1843 Emma Wheatley (b. 1821, d. Nottingham 1895)<sup>14</sup>  
 9/3 **Catherine SADLEIR**<sup>15</sup> called Kate; she m. 30 May 1838  
 Nicholas-Biddulph Grene; they had issue:  
 10/1 **Clement GRENE**  
 10/2 **James GRENE**  
 10/3 **John GRENE**  
 10/4 **Nicholas GRENE**  
 10/5 **Hannah GRENE**  
 10/6 **Lucinda GRENE**  
 10/7 **Emma GRENE**



John Sadleir MP, *Prince of Swindlers* (1813-1856)  
 Cover of the book by James O'Shea

- 9/4 **John SADLEIR**<sup>16</sup> third son of Clement William Sadleir, b. 1813, d. unmm (suicide) Hampstead Heath 17 Feb 1856; educ Clongowes College; succeeded an uncle in a prosperous Dublin solicitors' business; director of the bank established by his bro James; retired from legal profession 1846; active parliamentary agent for Irish Railways, and connected with various financial enterprises inc Grand Junction Rly of France, East Kent Line, Rome and Frascati Rly, a Swiss rly and a coal co'y; able chairman of London & County Joint Stock Bank from 1848 to within a few months of his death; kept a small stud of horses at Watford to hunt with the Gunnersbury hounds; elected MP for Carlow 1847, firm supporter of John Russell till the Wiseman controversy, when he became influential leader of "the pope's brass band" and the "Irish brigade"; appointed a junior lord of the treasury under Lord Aberdeen 1853, but deselected by his constituents that year; instead elected MP for Sligo 1853 – disclosure of irregularities in his election forced him to resign his junior lordship, tho he kept the seat until his death; by Feb 1856 he was overdrawn in his account with the "hopelessly insolvent" Tipperary Bank to the extent of £200,000; on Sat 16 Feb Messrs Glyn, London agents of the bank, returned its drafts as not provided for; John Sadleir was seen in the city during the day and at his club till 10.30pm; next morning his body was found on Hampstead Heath with a silver cream jug and a bottle of poison; the bank was found to have assets of only £35,000, and losses to depositors (mostly small farmers and clerks) amounted to £400,000; he was found to have dealt largely in lands sold at the encumbered estate court in Ireland, and to have forged conveyances for such lands in order to raise money; he fabricated duplicate shares in the Royal Swedish Rly Co'y, of which he appropriated 19,700; Sadleir described by the Times (London, 10 Mar 1856) as "a national calamity", by the Nation (Dublin) as "a sallow-faced man, wrinkled with multifarious intrigue, cold, callous, cunning"; Charles Dickens based Mr Merdle in Little Dorrit on "that precious rascality, John Sadleir"; popular rumours in Spring 1856 that he was alive and well and living in America discounted at the coroner's inquest  
 9/5 **Clement SADLEIR**; m. 1852 Louisa Lalor of Cregg, Kilkenny
- 6/2 **William SADLEIR**, dsp<sup>17</sup>  
 6/3 **Oliver SADLEIR**, dsp; m. Mary Dugan of Cork<sup>18</sup>  
 6/4 **Nicholas SADLEIR** JP<sup>19</sup>, d.1762<sup>20</sup>; of Golden Garden and Sadleir's Wells<sup>21</sup>; m. 1741 Anne

<sup>14</sup> marriage details from O'Shea, but I'm not clear whether the dates are Emma's or James'

<sup>15</sup> Catherine and her family details from the GRENE OF CAPPAMURRA entry in *Burkes's Landed Gentry of Great Britain and Ireland*

<sup>16</sup> this account of his life based on the Dictionary of National Biography on Ancestry.com

<sup>17</sup> dsp acc irishbooks. In *Prince of Swindlers* O'Shea names only a Clement William, Oliver and Nicholas; perhaps he conflates John and William, or perhaps Chadwick tree splits Clement William

<sup>18</sup> dsp acc irishbooks. Marriage details from O'Shea

Ballard and had issue, inc.:

- 7/1 **Grace SADLEIR** m. her 3<sup>rd</sup> cousin Richard Sadleir of Nelson St Tipperary  
7/2 **Jane SADLIER**, 2nd dau of Nicholas Sadlier of Golden Garden co Tipperary, m.  
1st 1768 as his 2nd wife Richard Chadwick (he c1713-c1770) ; they had issue – see  
CHADWICK tree  
Jane Sadlier m. 2nd in 1772 Anthony Armstrong of Emly and had issue several  
children



*Aerial view of Sadleirswells co Tipperary, 2000*

– few features of the designed landscape remain visible compared to maps of 1836

- 7/3 **Richard SADLEIR**<sup>22</sup>, bought Kings Wells and renamed it Sadleir's Wells; m.  
Eleanor Toler and had issue:  
8/1 **Richard SADLEIR**<sup>23</sup> 3x great grandfather of the present writer, of  
Sadleirswells co Tipperary<sup>24</sup> (poss b. Sadleir's Wells c1783, d. 1835<sup>25</sup>), m.  
**Mathilda Frances Massy**, called Frances, (b. 1783 Dublin City<sup>26</sup>) and  
had issue – see RICHARD SADLEIR below  
8/2 **William "Billy" SADLEIR**<sup>27</sup> m. **Alicia Chadwick** (d. 1835) dau of  
Richard "Parson Dick Chadwick and Margaret Sadleir dau of Nicholas  
Sadleir  
6/5 **Ambrose SADLEIR**, dsp  
6/6 **Richard SADLEIR**<sup>28</sup> of Holycross and Scalaaheen; had issue  
6/7 **another son**, dsp  
5/4-5/8 **five other children**  
4/2-4/10 **nine other children**  
3/2-3/4 **at least three more children**  
2/2-2/4 **at least three more children**

### **RICHARD SADLEIR**

**Richard SADLEIR**<sup>29</sup> 3x great grandfather of the present writer of Sadleirswells co Tipperary (poss b. Sadleir's Wells c1783, d. 1835<sup>30</sup>); held estate in the parishes of Rathlynin, Templebredon and Tipperary, barony of Clanwilliam, county Tipperary, in the mid 19th century<sup>31</sup>; m. **Mathilda Frances Massy**, called Frances, (b. 1783 Dublin City<sup>32</sup>, d. 1853<sup>33</sup>) and had issue, inc<sup>34</sup>:

- 1/1 **Eyre Nicholas SADLEIR** b. Sadleirswells 1812<sup>35</sup>; seems to have sold estate of Stangesmore or East Stanges to Henry William Massy 7 Nov 1851  
1/2 **William George SADLEIR** b. Sadleirswells 1814<sup>36</sup>, living 1848 – see Theodore below  
1/3 **John Toler**<sup>37</sup> **SADLEIR** b. Sadleirswells 1816<sup>38</sup>, d. bef 30 Sep 1854<sup>39</sup>; gentleman, bought himself into 2<sup>nd</sup> Regt of Foot as ensign 2<sup>nd</sup> Jun 1843<sup>40</sup>; May 1847 m. at St Thomas's Old Portsmouth **Mary Mitchell** (b. in either Old Portsmouth or Emsworth 29 Jan 1832) dau of William Mitchell, an artist, and Mary Harris, who m. in Alverstoke near Portsmouth 21 Aug 1831; it seems a distinct possibility that John Toler S died on board HMS Birkenhead Feb 1852

<sup>19</sup> JP from <http://www.marshalclarke.com/ClarkesOfGraiguenoepark/Clarkes5.htm>

<sup>20</sup> death date O'Shea

<sup>21</sup> O'Shea gives Golden Garden and Lachen, which makes better sense of Clarke's claim that it was his son who named Sadleirswells. O'Shea also provides marriage details

<sup>22</sup> from <http://www.marshalclarke.com/ClarkesOfGraiguenoepark/Clarkes5.htm>, not mentioned in RSNZ or Chadwick

<sup>23</sup> Note that Anthony Sadleir says a quick search reveals no connection between this couple and RWRS, but RSNZ's transcription does confirm it

<sup>24</sup> youngest son of Richard and Eleanor Sadleir, according to <http://landedestates.nuigalway.ie:8080/LandedEstates/jsp/family-show.jsp?id=3352>

<sup>25</sup> IGI

<sup>26</sup> IGI

<sup>27</sup> This is entirely my speculation about where Billy Sadleir, uncle of Francis Hugh Massy, fits in; is he even the same William Sadleir who m. Alicia Chadwick?

<sup>28</sup> Richard and the un-named 7th son are not listed in the Chadwick tree, only in the [irish-books.org](http://irish-books.org) Sadleir history; but he is roughly contemporary with the Richard S. son of Samuel S. (1667-1717) and could be the same man, since both are listed "of Scalaaheen"; but which one?! Then again, we know this Richard is the son of Clement, not Samuel ...

<sup>29</sup> Note that Anthony Sadleir says a quick search reveals no connection between this couple and RWRS, but RSNZ's transcription does confirm it

<sup>30</sup> IGI

<sup>31</sup> <http://landedestates.nuigalway.ie:8080/LandedEstates/jsp/family-show.jsp?id=3352>

<sup>32</sup> IGI

<sup>33</sup> Jennie Macfie

<sup>34</sup> 10 sons, RWRS the eldest, according to <http://landedestates.nuigalway.ie:8080/LandedEstates/jsp/family-show.jsp?id=3352> – this list follows that of Jennie Macfie

<sup>35</sup> RSNZ has bap. Tipperary or Cashel 14 Jul 1820

<sup>36</sup> RSNZ has bap. Tipperary or Cashel 16 Jan 1822

<sup>37</sup> From <http://www.marshalclarke.com/ClarkesOfGraiguenoepark/Clarkes5.htm>, hereafter Clarke

<sup>38</sup> RSNZ has bap. Tipperary or Cashel 18 Apr 1823

<sup>39</sup> Date on which his widow remarried to Charles Sabine, gentleman in Southampton – marriage info from Rachel a descendent of Mary on Genes Reunited

<sup>40</sup> *London Gazette*, [www.london-gazette.co.uk/issues/20230/pages/1847/page.pdf](http://www.london-gazette.co.uk/issues/20230/pages/1847/page.pdf)

- 1/4 **Theodore Ralph SADLEIR** b. Sadleirswells 1818<sup>41</sup>, d. 1848<sup>42</sup>
- 1/5 **Richard William Ralph SADLIER**,<sup>43</sup> JP co Tipperary, bap. Tipperary or Cashel 19 Jan 1819<sup>44</sup>,<sup>45</sup> Munster<sup>46</sup> d. 4<sup>th</sup> quarter 1876<sup>47</sup>; m. in Tipperary 1848<sup>48</sup> Eleanor Wilhelmina Octavia Cooper (of Killenure Castle co Tipperary, b. 5 Jun 1820, d. 29 Oct 1906 – see COOPER tree); 1850 he's landlord of Catherine Steallum (or poss Stakelum) of Rathkennan, tenant of five house/land holdings totalling c11 acres; Jan 1854 estates for sale in counties Tipperary, Kilkenny and Limerick of 1720 acres, which inc Sadleirswells<sup>49</sup>; 1861 chemical manufacturer's assistant, living at Elm Cottage, St Helen's Rd, Sutton, Lancs with wife, all 5 children and William Slattery (a "poor dependant" b. Ireland c 1801); 1864 set up New Road Chemical Works in St Helen's with John Lawrence Kean<sup>50</sup>, went out of business 1866<sup>51</sup>; 1871 census occup banker's clerk living at 15 Welfield Place, Toxteth Park, Liverpool; 1881 EWOC living age 60 at 14 Orrell Park, Walton on the Hill, with Margarita, lodger John Moffat and 2 servants; 1891 EWOC living (age 69?!) with Margarita and 2 servants at 14 ?Stoneton Rd, Birkenhead (and spelling it Sadleir); 1901 with Margarita (age 40!) and Alicia Frances (age 30!) both unm at The Hollies, Little Saughall, Cheshire; had issue:
- 2/1 **Margarita Rebecca Louisa SADLIER**, b. Ireland c1850, dunm. at 4 Leinster Rd, West Rathmines, co Dublin 16 Apr 1930, probate 9 Jul 1930 to William Henry Castle (bro in law), effects £2552 2s 2d; 1891 unm living with her mother at 14 ?Stoneton Rd, Birkenhead (given age 50 surely a slip of the pen, which she makes up for at the next census!); 1901 with her mother; 1930 of Hillhead, Colyton, Devonshire
- 2/2 **Eleanor Wilhelmina SADLEIR**, b. Preston, Lancs c1852, d. 14 Jan 1920; m. Sep 1878 William Henry Castle – see CASTLE tree; 1871 staying with friends the Carrs in Windle, not with her parents in the Toxteth household, tho her sisters-in-law Elizabeth and Caroline are – and are not defined as visitors); they had issue, inc:
- 3/1 **Eleanor May CASTLE** (see CASTLE tree) m. Frederick Gurney SALTER (see SALTER tree) and had issue, inc:
- 4/1 **Charles Henry SALTER** m. Moira Scott Tough (see TOUGH tree) and had issue, inc:
- 5/1 **Colin SALTER**
- 2/3 **Richard Ralph SADLIER**<sup>52</sup> b. Wales<sup>53</sup> 1<sup>st</sup> Q 1854, d. Axminster Devon 3<sup>rd</sup> Q 1928<sup>54</sup>; 1871 unm, occup ships' broker's apprentice
- 2/4 **Alicia Frances SADLIER**<sup>55</sup> b. Penmorfa, Caernarvon, 16 Sep 1855<sup>56</sup>, dunm. Axminster Devon 20 Jan 1921, probate granted 15 Feb 1921; 1891 unm staying with her sister Eleanor and husband William Castle at Beaulieu Rd, Lyndhurst, Hants; 1901 with her mother
- 2/5 **Eyre Cooper SADLIER** b. St Helens, Lancs c1858, d. Belfast 4th Q 1901; 1871 w parents in Toxteth; 1901 unm steam pipe fitter, visitor at Charles Hill, 27 Station Rd, Walsall St Pauls
- 1/6 **Daniel SADLEIR** b. Sadleirswells 1820<sup>57</sup>



*The gravestone of Henry Beresford Sadleir (1822-1909)*

- 1/7 **Henry Beresford SADLEIR** b. Sadleirswells 1822<sup>58</sup>, d. 19 Sep 1909 (given age 81), bur. Toora Cem'y, Victoria, Australia; bef 1859 emig to Australia, living 1859 at Long Point, Creswick; 1858 after a public meeting 30 Jun, signatory as a householder to a petition to Govt of Victoria seeking that Creswick be declared a municipal district; 1884 retired as Captain, Ballarat Battalion<sup>59</sup>; 1870, Henry and Theresa were master and matron at the Ballarat Orphan Asylum; m.<sup>60</sup> 29 Jun 1859 at Buninyong, by Rev. J. G. Russell, **Theresa Mary Kildahl**, (b. Dublin 7 Dec 1838, d. Clifton Hill, Victoria 1929) eldest daughter of John Kildahl<sup>61</sup>, Esq., late of Dublin.

<sup>41</sup> Not in RSNZ

<sup>42</sup> *Death according to a footnote to the sale of Stangemore under the Encumbered Estates Act of 1848 and 1849 allowed for the sale of Estates which were burdened with debt (seen Mar 2013 at <http://www.igp-web.com/tipperary/estates/estate37.htm>): The last renewal [of the lease of the lands], from the Reverend Chas. William Wall to William Sadleir, bears date the 29<sup>th</sup> April, 1844, and is for the lives of Richard William Ralph Sadleir, William Sadleir, and Theodore Ralph Sadleir, of whom Richard William Ralph Sadleir and William Sadleir are still living; the said Theodore Ralph Sadleir having died in 1848.*

<sup>43</sup> Spelling according to 1871 census return

<sup>44</sup> from original C of I records for Tipperary and Cashel held in CPA Bolton Library, Cashel, transcribed by Richard Sadleir, Lower Hutt NZ in Sep 2002 ([www.rootsweb.com/~irltip2/sadlier.htm](http://www.rootsweb.com/~irltip2/sadlier.htm)), hereafter RSNZ!

<sup>45</sup> 1871 census given age of 52 also suggests c1819, but from Anthony Sadleir I have b.1823 – Jennie Macfie has 1820

<sup>46</sup> Birth details from Anthony Sadleir

<sup>47</sup> FreeBMD

<sup>48</sup> Date and place from Anthony Sadleir

<sup>49</sup> <http://landedestates.nuigalway.ie:8080/LandedEstates/jsp/family-show.jsp?id=3352>

<sup>50</sup> struggling to find information about him – a JLK married in Prescot, Lancs in 1862, and he seems of have moved to Glasgow by 1881

<sup>51</sup> from "A Merseyside Town in the Industrial Revolution – St Helen's 1750-1900", TC Barker & JR Harris, p347. Edinburgh Gazette 8 May 1868 carries notice under Bankruptcies Awarded: "Richard William Ralph Sadleir of Rainford, Lancaster, manufacturing chemist, trading in copartnership with John Lawrence Kean and William Holden, at St Helen's, Lancaster, as manufacturing chesmists, under the style or firm of Kean & Co." William Holden is the next entry.

<sup>52</sup> Source Anthony Sadleir

<sup>53</sup> FreeBMD has Festiniog Merioneth; 1861 census as Caernarvonshire

<sup>54</sup> England & Wales death index

<sup>55</sup> Source Anthony Sadleir

<sup>56</sup> OneWorldTree; FreeBMD has Festiniog Merioneth

<sup>57</sup> Not in RSNZ

<sup>58</sup> Not in RSNZ

<sup>59</sup> Reported in Melbourne Argus Sat 28 Jun 1884

<sup>60</sup> Reported in Melbourne Argus Sat 2 Jul 1859

<sup>61</sup> *From the Buninyong and District Historical Society newsletter Feb 2004: John and Catherine Kildahl arrived in Geelong with their seven children in 1855. They make their first official appearance in Buninyong by 1856, when John Kildahl, solicitor, appears in the Buninyong Electoral Roll, issued on 30 June 1856. In the 1857 Directory he is listed as a solicitor, and in the same year his 16 year old son Lawrence was given the job of Head Teacher at the new Black Lead Church of England and Ireland school which opened on 2 February 1857. The Kildahls came from the same Anglo-Irish background as the Reverend Garrett Russell, a Trinity College man with a family of six sons and one daughter, all within the same age range as the Kildahl children. Russell was appointed to the new parish of Buninyong in 1856, and he began establishing schools in the district in 1857. It is interesting that there were no marriages between the families. John Kildahl was*

- 1/8 **Leighton SADLEIR** b. Sadleirswells 1824<sup>62</sup>; an Alfred Leighton Sadleir m. in Seapatrick, Co Down, 16 Nov 1852 Kate Evelena St Ledger dau of George St Ledger
- 1/9 **George John SADLEIR** b. Sadleirswells 1826<sup>63</sup>
- 1/10 **a son**
- 1/11 **Frances Matilda SADLEIR**<sup>64</sup> m. 11 August 1864 **James Haughton**, son of John Haughton and Louisa Courtauld Osbourne; they had issue:
- 2/1 **Constance Ethel HAUGHTON** d. 17 Sep 1954; m. 21 September 1889 **Hugh Norris Vyvyan**, son of Philip Vyvyan and Augusta Baker Norris; they had issue:
- 3/1 **Hugh Wren VYVYAN** b. 19 Dec 1890, d. 19 Sep 1966
- 3/2 **Beresford Haughton VYVYAN** b. 7 Mar 1893
- 3/3 **Malcolm VYVYAN** b. 21 Nov 1895
- 3/4 **Gertrude Nevillia VYVYAN** b. 13 May 1906
- 2/2 **Matilda Louisa HAUGHTON** d. young
- 2/3 **Eileen Dorothea HAUGHTON** dnm.
- 2/4 **Ada Gwendoline HAUGHTON** dnm.
- Mathilda Frances Sadleir** nee Massy m. 2<sup>nd</sup> Rev Dawson Massy<sup>65</sup>, and had issue, a dau<sup>66</sup>

### SAMUEL SADLEIR

**Samuel SADLEIR**<sup>67</sup> b. c1667, d. 1717; of Shanballymore co. Tipperary; second son of John Sadleir of Ballintemple; m. c1687 Hannah Taylor (nee White) and had issue:

- 1/1 **Elizabeth SADLEIR** m. William Russell<sup>68</sup>
- 1/2 **Richard SADLEIR** b. c1696, d. 1748; of Scaliheen co. Tipperary; m. c1720 Mary ---- and had issue:
- 2/1 **Richard SADLEIR**<sup>69</sup> b. c1725; of Tipperary Town, merchant and factory owner; m. 1749 Mary Alleyn; they had issue:
- 3/1 **James SADLEIR**; of Tipperary Town and then Cork; ancestor of Maj **George Forster Sadleir** (1789-1859), first European to cross Saudi Arabia in 1819; and of
- 4/1 **James SADLEIR** sailed 24 Aug 1825 on the ship Thames with his brother Richard to NSW, arr Port Jackson 11 Apr 1826
- 4/1 **Richard Sadleir**<sup>70</sup> b. Cork 6 May 1794, d. 1889, fourth son of James Sadleir; RN, JP who fought in 1814-15 war against USA, emig to Sydney 1826, was elected to govt there, wrote the first book on aborigines, was first mayor 1872 of Liverpool (many Oz Sadleirs descended from him, and suburb of Sydney named Sadleir after him); m. 12 Dec 1830 in St Lukes Bonnyrigg NSW Anne Cartwright governess sometime working in Holland (d. 1870) dau of Robert Cartwright
- 3/2 **Richard SADLEIR** of Holycross Tipp and then Nelson Street<sup>71</sup> Tipp Town b. c1762<sup>72</sup> m. 1783 **Grace Sadleir**, dau of Nicholas Sadleir of Golden Garden, so 1st cousin twice removed (prob b. c1758, bur. 12 Mar 1824)<sup>73</sup>; they had issue<sup>74</sup>:
- 4/1 **Richard SADLEIR** of Scalaheen; m. 1809 Helen Massey; they had issue:
- 5/1 **Grace Massey SADLEIR**, m. Richard Butler Richard Sadleir m. 2<sup>nd</sup> in 1817 Elizabeth Lefroy
- 4/2 **Nicholas SADLEIR** of Dunboyne Castle, gt grandfather of Admiral Lord Beatty (therefore had issue!)
- 4/3 **William SADLEIR** of Scalaheen, had issue:
- 5/1 Lt Gen **Richard SADLEIR**, m. Louise Russell
- 5/2 **James SADLEIR** of Roesborough

---

born in Dublin in 1796, son of Nicholas Kildahl who came from Norway. He became a solicitor in Dublin (perhaps attended Trinity College) and married Catherine Anne Parke (1814-1901) daughter of Sir Charles Parke of Castle Carr, County Lenthim. Her family had drowned in 1839 when returning from a trip to America. Catherine and her brother John had stayed in Dublin. John and Catherine married in Dublin in 1835, when John was 39 and Catherine was 21. Their living children were: **Theresa Mary**, born 7 December 1838 Dublin, married Henry Beresford Sadleir in 1859 at Winter's Flat, Buninyong. Died 1929, Clifton Hill, Vic.; **Lawrence Hercules**, born 1841 Roeburke, Ireland; married Edith Charlton Sandford 1888 Vic. Died 30 January 1925 Surry Hills; **Margaret Anne**, born 1844 Ireland; died 1927 East Malvern; **Elizabeth Jane**, born 1847 Ireland; married Edward Stackpot Astbury; **Catherine Anne** born 1851 Ireland; married William Trench Clifford Kelly, died 1930?; **Evangeline Maria**, born 1853 Ireland, died 1926 East Melbourne; **Helen Victoria** born 31 August 1855, married Ernest William Minchin 1879 Geelong, died 1930?; **Ida Octavia**, born 2 November 1857 Buninyong. Married William Donald Mackay 12 February 1881 Ross NZ; died 1943 Hokitika, NZ. She was baptised in Buninyong on 23 August 1858. Teaching was the family profession, with mother and children involved in teaching. Lawrence had begun his teaching career in 1857 as a 16 year old, and around the same year a Ladies' Boarding School was advertised in Learmonth St, run by Mrs Kildahl and her daughters. (article in Ballarat Courier, 28 July 1973, p. 21) In 1862 there was a Mrs Kildhal advertising a ladies' school in Clarendon Street, Ballarat (1862 Ballarat Directory). John Kildhal died on 28 March 1863 at Winter's Flat, aged 68, leaving his wife and daughters to provide for themselves. The youngest child was only 5 years old. Catherine, who was 18 years younger, died in Gippsland in 1901, and they are both buried at Buninyong. Lawrence Kildhal pursued his teaching career: ENFIELD/ WHIM HOLES Church of England established school No. 662 in 1858-9, called Little Hard Hills School. Whim Holes School No. 662 opened with Laurence Kildhal as first HT. Closed August 1862. (Napoleons and District p. 60); DOLLY'S CREEK In December 1859 the Rev. G.J. Russell applied to the Denominational Board for aid for a proposed Church of England School at Dolly's Creek. First officially approved HT was Laurence H. Kildahl (1st Jan 1861 - 31 Dec. 1861). Officially called Dolly's Creek No. 194. (Vision and Realisation, V.2, p. 634.) 1873 he was Head Teacher of the Ballarat Orphanage School on a salary of 221 pounds. (Anne Begs Sumter, 2004)

<sup>62</sup> Not in RSNZ

<sup>63</sup> RSNZ has bap. Tipperary or Cashel 14 Apr 1833 (mother is noted as Matilda, where all others have been Frances or Frances Matilda) – Jennie has no middle name

<sup>64</sup> Known to me only from [www.thepeerage.com](http://www.thepeerage.com), which gives her spouse and 4 children

<sup>65</sup> <http://www.stirnet.com/HTML/genie/british/mm4ae/massy1.htm>

<sup>66</sup> From a note to May Castle from her aunt Louie: *Grandmother Sadleir ... married again and she had a daughter more Spanish than any of you.*

<sup>67</sup> Most of the following tree is from RSNZ

<sup>68</sup> Elizabeth and spouse from <http://www.marshalclarke.com/ClarkesOfGraiguenoepark/Clarkes5.htm>

<sup>69</sup> Clarke has only Samuel Sadleir of this generation, and no details

<sup>70</sup> extensive bio notes in a NSW fact sheet (copy in possession of present writer) at

<http://www.google.co.uk/url?sa=t&source=web&cd=2&ved=0CCAQFjAB&url=http%3A%2F%2Fwww.liverpool.nsw.gov.au%2FLCC%2FINTERNET%2FrimDownloadDocument.aspx%3Fnumber%3D056389.2007&rct=j&q=%22richard%20sadleir%22%20mayor%20liverpool&ei=QIsYTqr9B5S5hAfhhvDMBQ&usq=AFQjCNGtbYGBRMOzTxKmnCu2jSqpsBdR2A&cad=rja>

<sup>71</sup> Clarke

<sup>72</sup> IGI

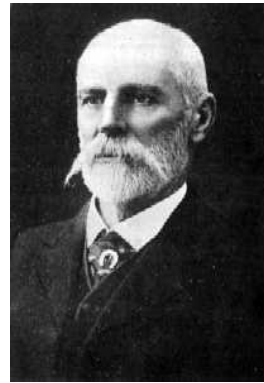
<sup>73</sup> A OneWorldTree on Ancestry.com has this Grace's parents as Nicholas Sadleir and Anne Ballard; and this Richard's parents as Clement Sadleir and Elizabeth Pennefather (m. 1765, both d. in Tipperary); the son James has the same year dates there as here

<sup>74</sup> Issue details from Clarke. RSNZ's transcription of Tipp BMDs shows a Richard Sadleir of Bofanna and Grace ---- with three daughters: **Anna Maria Sadleir** bur. 1787, **Wilhelmina Sadleir** bap. 1788, **Alice Sadleir** bap. 1788 – their ages would fit this family, which we know from RSNZ's tree was a big one. A **Wilhelmina Sadleir** of presumably similar age m. 1814 Andrew Armstrong M.D.; an **Alicia Sadleir** of the town [of Tipperary?] m. 1807 Joseph White (Wicklough)

- 4/4 **James SADLEIR** b. 1792, d. Tipperary 27 May 1864; m. by license 31 Aug 1819 Elizabeth or Eliza Hare Clarke<sup>75</sup>; they had issue<sup>76</sup>:
- 5/1 **Marshal SADLEIR**, bap. 29 Dec 1827; m. Alicia Campbell<sup>77</sup>; they had issue:
    - 6/1 **James William Creagh SADLEIR**, bap. 22 May 1859
    - 6/2 **Stephen de Burgh SADLEIR**, bap. 7 Oct 1860
    - 6/3 **Sarah Perse SADLEIR**, bap. 22 Jun 1862
    - 6/4 **Henry Pers Creaghe SADLEIR**, bap. 13 Mar 1864
    - 6/5 **Elizabeth Sarah Clarke SADLEIR**, bap. 1 Dec 1870
  - 5/2 **James Robert SADLEIR** bap. 5 Jan 1831; m. Mary ----<sup>78</sup>; they had issue:
    - 6/1 **May Susan SADLEIR**, bap. 8 Nov 1882 [father's age 51 suggests this may have been a second family]
    - 6/2 **Grace Eileen SADLEIR**, bap. 14 May 1884
    - 6/3 **Blanche SADLEIR**, bap. 3 Nov 1885
    - 6/4 **James Robert McMahon SADLEIR**, bap. 15 Nov 1887, emig to California
    - 6/5 **Maud Eveleen SADLEIR**, bap. 21 Nov 1889
    - 6/6 **Marshall John Clarke SADLEIR** of Brookville, bap. 3 Feb 1892, bur. St Michael's cemetery 19 Sep 1963; emig to Victoria Australia in 1872 and has descendents in Australia, but d. at Brookville, and the estate was then sold out of the family



SUPERINTENDENT SADLEIR



Superintendent John Sadleir (c1832-1919)

- 5/3 **John SADLEIR** b. 1832 or 1833, bap. 11 Jun 1833, d. 21 Sep 1919, bur Brighton Cem'y Melbourne; emig to Australia with his bro Nicholas 1852; joined Victoria Police, was Supt i/c operation which captured Ned Kelly 1880; pub "Recollections of a Victorian Police Officer" 1913 (see fuller biog at [www.brightoncemetery.com/HistoricInterments/15\\_0Names/sadleirj.htm](http://www.brightoncemetery.com/HistoricInterments/15_0Names/sadleirj.htm)); m. 1857 Isabella Maria Crofton<sup>79</sup>; had issue, inc.:
  - 6/1 **Harman SADLEIR** d. 1865, bur. Mebourne Gen Cem'y
  - 6/2 **Ernest William SADLEIR** d. 1937; went to the Western Australia goldfields in 1895
  - 6/3 **Frederick SADLEIR** d. 1865, bur. Mebourne Gen Cem'y
  - 6/4 **Ralph Crofton SADLEIR** d. 1943; went to the Western Australia goldfields in 1895; started a customs and shipping agency in Freemantle which continues to present (2004) as Sadleirs Transport
  - 6/5 **John SADLEIR**
  - 6/6 **Melesina SADLEIR** d. 1934
  - 6/7 **Isabella SADLEIR** d. 1939, bur. Springvale Necropolis
  - 6/8 **Mary SADLEIR** d. 1934
  - 6/9 **Grace SADLEIR**
  - 6/10 **Dora SADLEIR** d. 1952
  - 6/11 **George Nicholas SADLEIR** d. 1949; went to the Western Australia goldfields in 1895; started a customs and shipping agency in Freemantle which continues to present (2004) as Sadleirs Transport; 12423 Pte A.I.F. HQ 1916-19
  - 6/12 **Henry Woodward SADLEIR** b. 1871, d. 1954; went to the Western Australia goldfields in 1895; enlisted in WA contingent Boer War 1901, remaining in SA; 1912-1950 started a customs and shipping agency in Freemantle which continues to present (2004) as Sadleirs Transport; m. 1905 Irene Frances Rose; they had issue:
    - 7/1 **Ralph Crofton Rose SADLEIR** b. 1909, d. 1994; enlisted A.I.F. 2nd/16th Battalion 1940-43, wounded in action 1941; BA Arts Univ of WA 1965; m. 1935 Lyle Ann Stuart Boyd; they had issue:
      - 8/1 **Richard Michael Francis Stuart SADLEIR** b. 1936; BSc 1957, PhD 1961 (Univ of WA); Fellowships BC Canada, Aberdeen Scotland, London England 1962-67; Professor Bio Sci, Simon Fraser Univ, Burnaby, BC, Canada 1968-1980; director DSIR NZ; then director of science, Dept of Conservation NZ, 1981-96; pub 50+ scientific papers and 3 books; writer of much of this tree Aug 2004; m. 1962 Charlotte Tweedlie Grant; has issue, three children
      - 8/2 **another child**
    - 7/2 **another son**
    - 7/3 **another son**
- 5/4 **Nicholas SADLEIR**, twin with Helena, bap. 7 Jan 1835; emig to Australia with his bro Richard 1852;

<sup>75</sup> Clarke has Elizabeth Selina, called Eliza

<sup>76</sup> Clarke has issue in a different order

<sup>77</sup> Clarke has Alicia Creagh, which explains the names of some of her children

<sup>78</sup> Clarke has m. Miss Crofter, and becoming an agent general of police in Milburn; but this sounds like a confusion with his brother John's bride and career

<sup>79</sup> RSNZ notes: "there are over 120 descendents of this couple all born in Australia". Clarke has him dunm

prominent station manager in western NSW and Tasmania; had large family<sup>80</sup> with many living descendents in Australia, Argentina and Scotland; a Ronnie Land in Scotland is a gt grandson

- 5/5 **Helena SADLEIR**, twin with Nicholas, bap. 7 Jan 1835; dunm<sup>81</sup>  
5/6 **Richard SADLEIR** emig to Australia 1852;m, no children; known as Red Dick, he inherited £2500 in 1833 from his uncle Marshal Clarke<sup>82</sup>  
5/7 **Elizabeth SADLEIR**, m. William Maunsell Hodges<sup>83</sup>  
5/8 **Grace SADLEIR**, m. Mr Sargent<sup>84</sup>  
5/9 **Alicia SADLEIR** dunm<sup>85</sup>  
5/10 **Mary SADLEIR**, m. Mr Hammersley and went to Australia  
4/5 **Henry SADLEIR** of Kingston, Canada  
4/6 **Alicia SADLEIR**, m. 1807 Joseph White  
4/7 **Wilhelmina SADLEIR**, m. 1808 Richard Hammersley  
4/8 **Eliza SADLEIR**, m. Edward Sargent of Clonmel  
4/9 **Anne SADLEIR**, m. Henry Sargent  
4/10-4/11 **and two more children**  
3/3-3/5 **at least three other children**  
2/2 **another child**  
2/3 **another child**

---

<sup>80</sup> Clarke has him dunm

<sup>81</sup> Clarke

<sup>82</sup> Clarke

<sup>83</sup> Clarke

<sup>84</sup> Clarke

<sup>85</sup> Clarke

---

from the Chadwick tree:

**Nicholas SADLIER** b. 1713<sup>86</sup>; had issue, inc:

1/1 **Margaret SADLIER**, b. Barnane 1755, d. Perryville, Tipp<sup>87</sup>; m. Richard "Parson Dick" Chadwick (1752-1817 – see CHADWICK tree) and had issue,  
inc:  
2/9 **Rebecca CHADWICK**, d. 23 Apr 1859; m. William Cooper – see COOPER tree – my 3x great grandparents  
2/10 **Alicia CHADWICK**, d. sp 1835; m. **William Sadlier** of Sadleir's Wells

So **William Sadleir** m. Alicia (b. c1790, d. 1835), dau of Richard "Parson Dick" Chadwick and granddau of Nicholas Sadlier.

*Are William and Nicholas otherwise related? Bound to be! Is this the same Nicholas as Nicholas JP of Golden Garden who d.1762? Seems possible. If William is "of Sadleirswells" then he may be Wiliam George Sadleir son of Richard S and Mathilda Massy, although he would be 20+ yrs older than his wife Alicia, so perhaps more likely a brother of Richard 1783-1835*

**Jane Sadlier**, 2nd dau of Nicholas Sadlier of Golden Garden co Tipperary, m. 1st 1768 as his 2nd wife Richard Chadwick (he c1713-c1770 – see CHADWICK tree) ; they had issue, inc:

1/1 Nicholas "Posy" CHADWICK, b. 1771, d. Jan 1854; m. 1792 **Anne Sadleir** (d. 1826) and had issue, but no known grandchildren

Jane Sadlier m. 2nd in 1772 Anthony Armstrong of Emly and had issue several children

*Was Jane a sister to Margaret above, despite marrying the father of Margaret's husband? Jane and Parson Dick (Margaret's husband) were of similar date, and Jane and Margaret's fathers were both called Nicholas Sadlier. And are Jane Sadlier and Anne Sadleir related?*

---

*Info from <http://www.marshalclarke.com/ClarksOfGraiguenoepark/Clarks5.htm> which seems to correspond, although not completely, with RSNZ's account*

The Sadleirs of Tipperary are not related to the Sadleirs of Castletown.

---

<sup>86</sup> date from a OneWorldTree

<sup>87</sup> date and place from a OneWorldTree